

Patch Panels

Cat5e & Cat6/6A Patch Panels

© Basic Features:

- ☆ Significant margin over ANSI/TIA-568-A(TSB-40A), ISO/IEC 11801 & 50173 standard.
- ☆ Meet EIA 310D standard.
- ☆ A pair punch sequence enables a pair twist within 1/2" (12.7mm) of termination.
- ☆ Shielded and unshielded version for selection.
- ☆ Snap in and integrated design for choice.
- ☆ 110 and Krone type for selection.
- ☆ 568A and 568B wiring for selection.
- ☆ 16, 24 & 48 ports for selection.

© Product Certification:

E223921 

© Technical Parameters:

- ☆ Made of UL-94V-0 high-impact & fire retardant ABS material.
- ☆ Beryllium copper contact: 50 micro inch gold-plated pins over 100 micro inch nickel layer.
- ☆ Support 22 -26AWG wire gauge.
- ☆ Insertion Life Cycle: 1,000 cycles (minimum) / I.D.C 250 cycles (minimum)
- ☆ Current Rating: 1.5 Amps
- ☆ Dielectric Withstand Voltage: 1,000VAC RMS @ 60Hz/min
- ☆ The modular design allows different types of modules to be placed in the same patch panel, saving space in the compact environment. The patch panels use the same RJ45 jacks as that used in the work area, thus reducing spare part quantity and maintenance cost.
- ☆ Provide superior performance for internal, cross connect and consolidation point installation.
- ☆ Optional titanium design provides more elegant outlook.
- ☆ Cables can be fixed at the front part of the panel by use of wiring, providing strain relief for the cables, maintaining the bending radius of the cables and improving the attenuation and return loss performance.
- ☆ Patented design in PCB board enhances NEXT performance and innovative punch down and cable management design enhances the product durability, providing more convenient management of the patch panels.
- ☆ All panels are power sum swept frequency tested for Cat5e up to 155Mz and Cat6 up to 300 Mz.
- ☆ Operating Temperature: 0°C ~+60°C
- ☆ Storage Temperature: -40°C ~+60°C

© Transmission Properties:

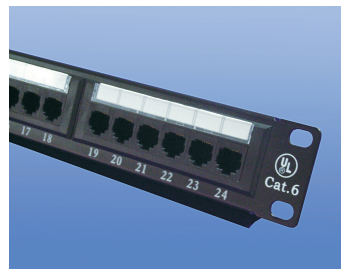
- ☆ Please refer to the technical data of the keystone jack.

© Product Highlights:

- ☆ Space saving & high density 19 panel design for 24 ports.
- ☆ Color coded icon identification tag for ease of installation.
- ☆ Write-on designation labels with clear holders on the front panel for system identification.
- ☆ 100% full shield design can improve EMI/RFI performance. They allow flexible grounding for shielded cable for each IDC pin.
- ☆ Shielded panels incorporate 360° stainless steel for full EMI (Electro-magnetic Immunity) shielding required by EN 50173.
- ☆ IDC connectors with large space on each pair help improve crosstalk performance.
- ☆ Cat 6 patch panels can be backward compatible with Cat5e or lower class products.
- ☆ Contacts are plated with galvanized platinum, achieving better conductivity and NEXT performance.



24 Port Cat5e Patch Panel



24 Port Cat6 Patch Panel

© Ordering Information:

☆ Unshielded CAT5e Patch Panel

Part No.	Description	Size	Dimension	Wiring
AD-PP-16-C5E-A/B	Unshielded CAT5e 16 Port Patch Panel	1.8"×19"	1U	T568A/B
AD-PP-24-C5E-A/B	Unshielded CAT5e 24 Port Patch Panel	1.8"×19"	1U	T568A/B
AD-IS-PP-24-C5E-A/B	Unshielded CAT5e 24 Port Smart Patch Panel	1.8"×19"	1U	T568A/B
AD-PP-48-C5E-A/B	Unshielded CAT5e 48 Port Patch Panel	3.6"×19"	2U	T568A/B
AD-IS-PP-48-C5E-A/B	Unshielded CAT5e 48 Port Smart Patch Panel	3.6"×19"	2U	T568A/B



☆ Unshielded CAT6 Patch Panel

Part No.	Description	Size	Dimension	Wiring
AD-PP-16-C6-A/B	Unshielded CAT6 16 Port Patch Panel	1.8"×19"	1U	T568A/B
AD-PP-24-C6-A/B	Unshielded CAT6 24 Port Patch Panel	1.8"×19"	1U	T568A/B
AD-IS-PP-24-C6-A/B	Unshielded CAT6 24 Port Smart Patch Panel	1.8"×19"	1U	T568A/B
AD-PP-48-C6-A/B	Unshielded CAT6 48 Port Patch Panel	3.6"×19"	2U	T568A/B
AD-IS-PP-48-C6-A/B	Unshielded CAT6 48 Port Smart Patch Panel	3.6"×19"	2U	T568A/B

Blank Patch Panel



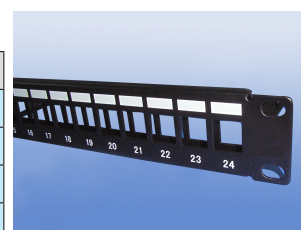
☆ Unshielded CAT6A Patch Panel

Part No.	Description	Size	Dimension	Wiring
AD-PP-16-C6A-A/B	Unshielded CAT6A 16 Port Patch Panel	1.8"×19"	1U	T568A/B
AD-PP-24-C6A-A/B	Unshielded CAT6A 24 Port Patch Panel	1.8"×19"	1U	T568A/B
AD-PP-48-C6A-A/B	Unshielded CAT6A 48 Port Patch Panel	3.6"×19"	2U	T568A/B

Cat5e UTP Patch Panel

☆ Shielded CAT5e Patch Panel

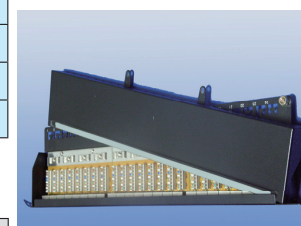
Part No.	Description	Size	Dimension	Wiring
AD-PP-16-C5ES-A/B	Shielded CAT5e 16 Port Patch Panel	1.8"×19"	1U	T568A/B
AD-PP-24-C5ES-A/B	Shielded CAT5e 24 Port Patch Panel	1.8"×19"	1U	T568A/B
AD-IS-PP-24-C5ES-A/B	Shielded CAT5e 24 Port Smart Patch Panel	1.8"×19"	1U	T568A/B
AD-PP-48-C5ES-A/B	Shielded CAT5e 48 Port Patch Panel	3.6"×19"	2U	T568A/B



☆ Shielded CAT6 Patch Panel

Part No.	Description	Size	Dimension	Wiring
AD-PP-16-C6S-A/B	Shielded CAT6 16 Port Patch Panel	1.8"×19"	1U	T568A/B
AD-PP-24-C6S-A/B	Shielded CAT6 24 Port Patch Panel	1.8"×19"	1U	T568A/B
AD-IS-PP-24-C6S-A/B	Shielded CAT6 24 Port Smart Patch Panel	1.8"×19"	1U	T568A/B
AD-PP-48-C6S-A/B	Shielded CAT6 48 Port Patch Panel	3.6"×19"	2U	T568A/B

Cat6 UTP Patch Panel



☆ Shielded CAT6A Patch Panel

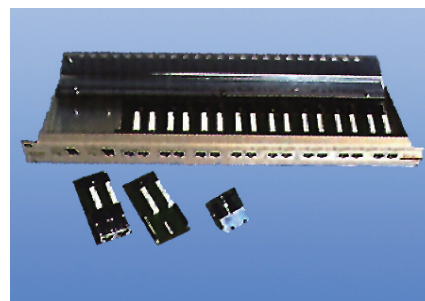
Part No.	Description	Size	Dimension	Wiring
AD-PP-16-C6AS-A/B	Shielded CAT6A 16 Port Patch Panel	1.8"×19"	1U	T568A/B
AD-PP-24-C6AS-A/B	Shielded CAT6A 24 Port Patch Panel	1.8"×19"	1U	T568A/B
AD-PP-48-C6AS-A/B	Shielded CAT6A 48 Port Patch Panel	3.6"×19"	2U	T568A/B

Cat6 FTP Patch Panel

Cat7 Patch Panels

© Product Highlights:

- ☆ Provide superior performance for internal, cross connect and fixed installation.
- ☆ The Cat7 patch panels can be backward compatible with Cat 6 or lower class products.
- ☆ 100% full shield design can improve EMI/RFI performance. They allow flexible grounding for shielded cable for each IDC pin.
- ☆ With black coating and rust resistant finishing, the panels come with no mounting screw on the front for more elegant appearance.
- ☆ Rear cover with wire management bar for maintaining proper bending radius of the cables.
- ☆ Support gigabit Ethernet application.
- ☆ Provide extra NEXT margin in support of future gigabit application. Contacts are plated with galvanized platinum, achieving better conductivity and NEXT performance.



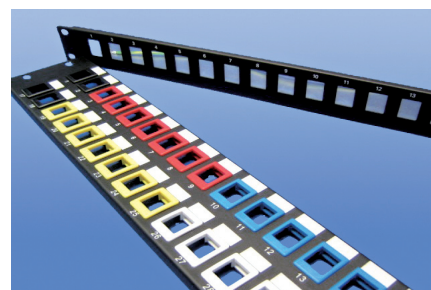
© Ordering Information:

Part No.	Description	Size	Dimension	Wiring
AD-PP-16-C7S-A/B	Shielded CAT7 16 Port Patch Panel	1.8"×19"	1U	T568A/B
AD-PP-24-C7S-A/B	Shielded CAT7 24 Port Patch Panel	1.8"×19"	1U	T568A/B
AD-PP-48-C7S-A/B	Shielded CAT7 48 Port Patch Panel	3.6"×19"	2U	T568A/B

Blank Patch Panels

© Features:

- ☆ Available in 16, 24 and 48 ports.
- ☆ Come with standard size in EIA 19".
- ☆ Come with exchangeable multimedia inserts for different connectors.
- ☆ Write on & erasable designation label for each port on the front panel.



© Ordering Information:

Part No.	Description	Size
AD-PP-BB-16	16 port Blank Patch Panel	1.8"×19"
AD-PP-BB-24	24 port Blank Patch Panel	1.8"×19"
AD-PP-BB-48	48 port Blank Patch Panel	5.4"×19"